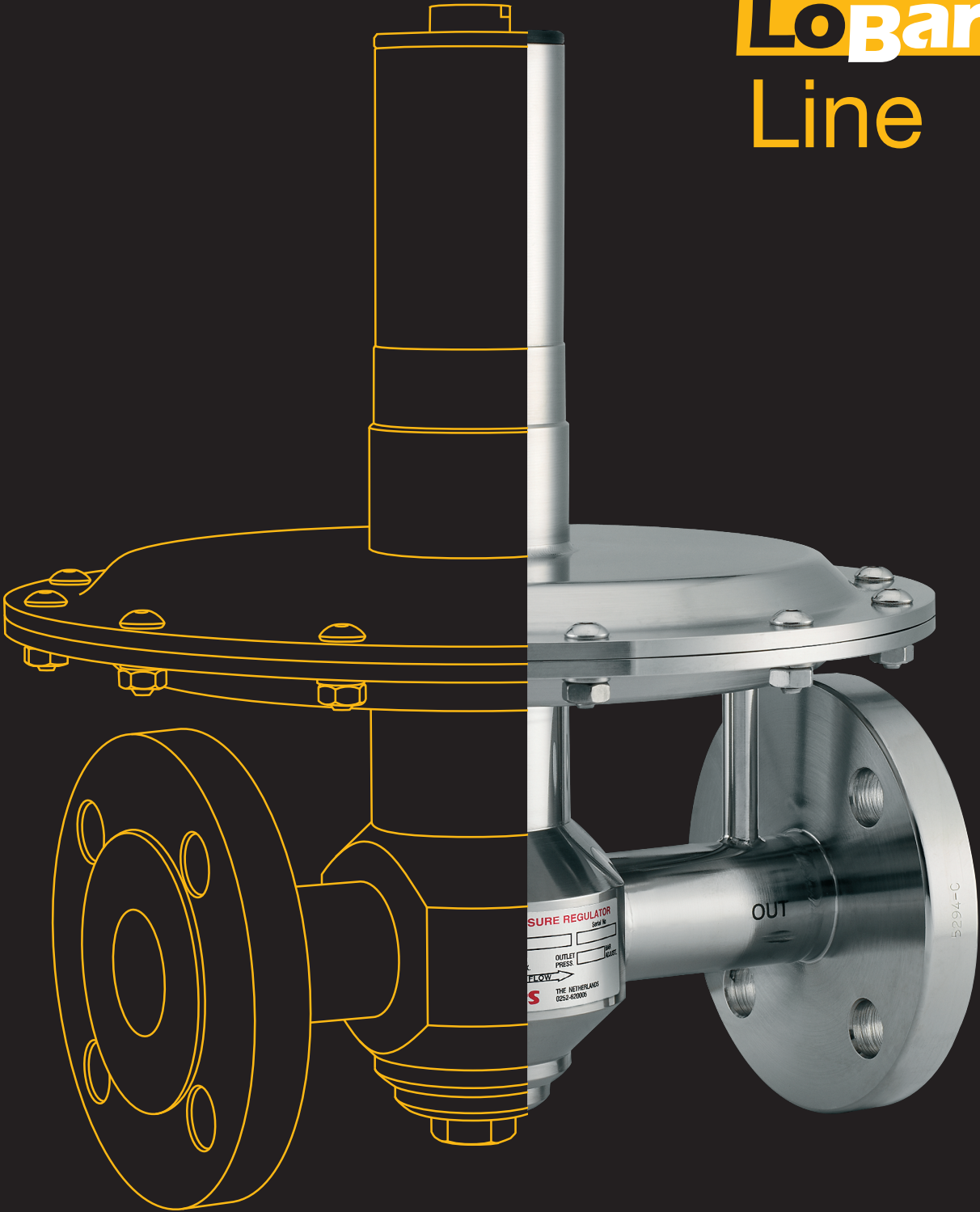


# Tank Blanketing Regulators

the

**LoBār**

Line



**RHPS Series**

**Swagelok**

# LoBār Regulators

Swagelok® RHPS Series LoBar Pressure Regulators are specifically designed for low pressure applications.

## Applications

Inertisation of storage tank vapourspaces, purging of reactorvessels, mixers etc.

## Pressure

16 bar inletpressure, 5-500 millibar outletpressure, vacuumtight.

## Connections

Flanges to din/ansi, npt, bsp or tri-clamps.

## Sizes

½"up to 2".

## Materials

Stainless steel 316L body and trim, ptfе diaphragm, viton seals with kalrez optionally. Exotic materials on request. Full material traceability.

## Testing

All LoBār regulators are 100% factory tested and ready for installation.



# Tank Blanketing Regulators

## Tankblanketing

This is the introduction of a (inert) gas into the vapourspace of a tank or vessel. The pressure of the blanketing gas, often nitrogen, is very low, usually less than 100 millibar.

- it makes the system explosionproof
- it reduces the oxygencontent
- it prevents contamination
- it prevents spoilage

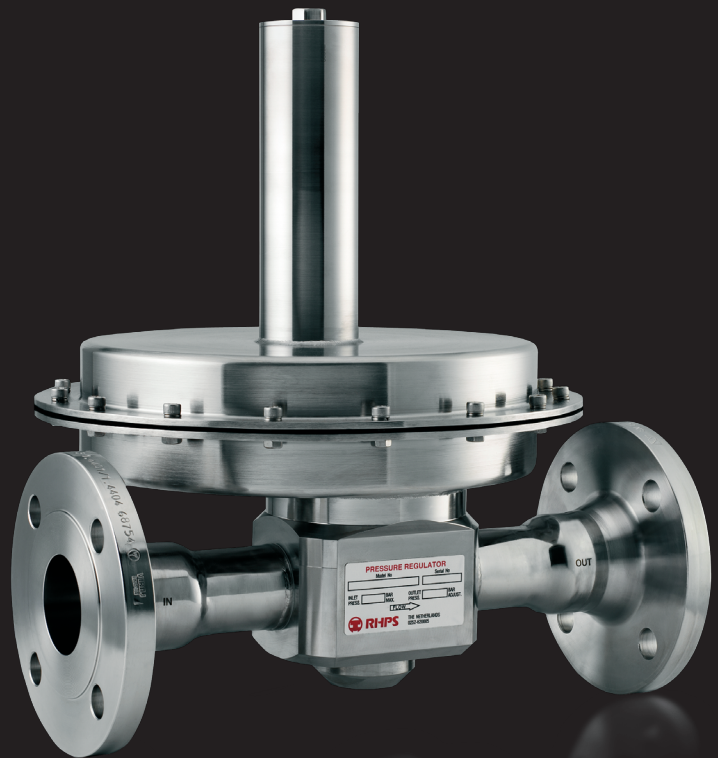
## Inertisation

Many processes in the pharmaceutical or chemical industry are batch processes. Small volumes of different products are produced in a short time in the same reactor vessels. This makes it necessary to clean and purge these vessels in between each production run.

# Venting Regulators

## Vacuuminertisation

After cleaning, a vacuumpump sucks out most of the 'atmosphere' in the vessel. Next nitrogen is introduced at low pressure to dilute the oxygen content of the vessel until the atmosphere is inert again.



# Additional RHPS Series Products

## **PRESSURE REDUCING REGULATORS**

*Designed to control the outlet pressure.*

### **SPRINGLOADED, KNOB ADJUSTMENT**

#### **The Red Line**

Designed for general industrial purposes.

- stainless steel 316L
- available in ¼ up to 1 in.
- bsp, npt or flanges
- pressure ratings 70 bar or 400 bar (1015 or 5805 psig)

#### **The Green Line**

Designed for the biotechnology and pharmaceutical industry.

- stainless steel 316L
- available in ½, and 1 in.
- clamps or aseptic connections
- pressure rating 35 bar (507 psig)
- 0,4 µm or 0,25 µm finish

#### **The Yellow Line**

Designed for the semiconductor industry.

- stainless steel 316L
- available in ½, ¾, and 1 in.
- weldstubs or face seal fittings
- pressure rating 35 bar (507 psig)
- 0,4 µm or 0,25 µm finish

### **SPRINGLOADED, SCREW ADJUSTMENT**

#### **The Setscrew Line**

Designed for general industrial purposes.

- stainless steel 316L
- available in 1, 1½, and 2 in.
- bsp or flanges
- pressure ratings 70 bar or 400 bar (1015 or 5805 psig)

#### **The High Purity Line**

Designed for the semiconductor industry.

- stainless steel 316L
- available in 1, 1½, and 2 in.
- weldends
- pressure ratings 20 bar or 35 bar (290 or 507 psig)
- 0,4 µm or 0,25 µm finish
- metal diaphragm
- helium leak tested

### **DOMELOADED**

- stainless steel 316L
- available in ¾ up to 4 in.
- bsp or flanges
- pressure ratings 70 bar or 400 bar (1015 or 5805 psig)

### **AIRLOADED**

- stainless steel 316L
- available in ¼ up to 1 in.
- bsp, npt or flanges
- pressure ratings 70 bar or 400 bar (1015 or 5805 psig)
- ratios 1:15, 1:40, 1:70

## **BACK PRESSURE REGULATORS**

*Designed to control the inlet pressure.*

### **SPRINGLOADED, KNOB ADJUSTMENT**

#### **The Blue Line**

Designed for general industrial purposes.

- stainless steel 316L
- available in ¼ up to 1 in.
- bsp, npt or flanges
- pressure ratings 70 bar or 400 bar (1015 or 5805 psig)

### **SPRINGLOADED, SCREW ADJUSTMENT**

#### **The Setscrew Line**

Designed for general industrial purposes.

- stainless steel 316L
- available in 1, 1½, and 2 in.
- bsp or flanges
- pressure ratings 70 bar or 400 bar (1015 or 5805 psig)

### **DOMELOADED**

- stainless steel 316L
- available in ¾ up to 4 in.
- bsp or flanges
- pressure ratings 70 bar or 400 bar (1015 or 5805 psig)

### **AIRLOADED**

- stainless steel 316L
- available in ¼ up to 1 in.
- bsp, npt or flanges
- pressure ratings 70 bar or 400 bar (1015 or 5805 psig)
- ratios 1:15, 1:40, 1:70

Contact your authorized Swagelok sales and service center or visit [www.swagelok.com](http://www.swagelok.com) for more information.

All service marks and trademarks shown are owned by Swagelok Company © 2010 Swagelok Company MS-04-170-E

**Swagelok**

Value beyond the expected™